

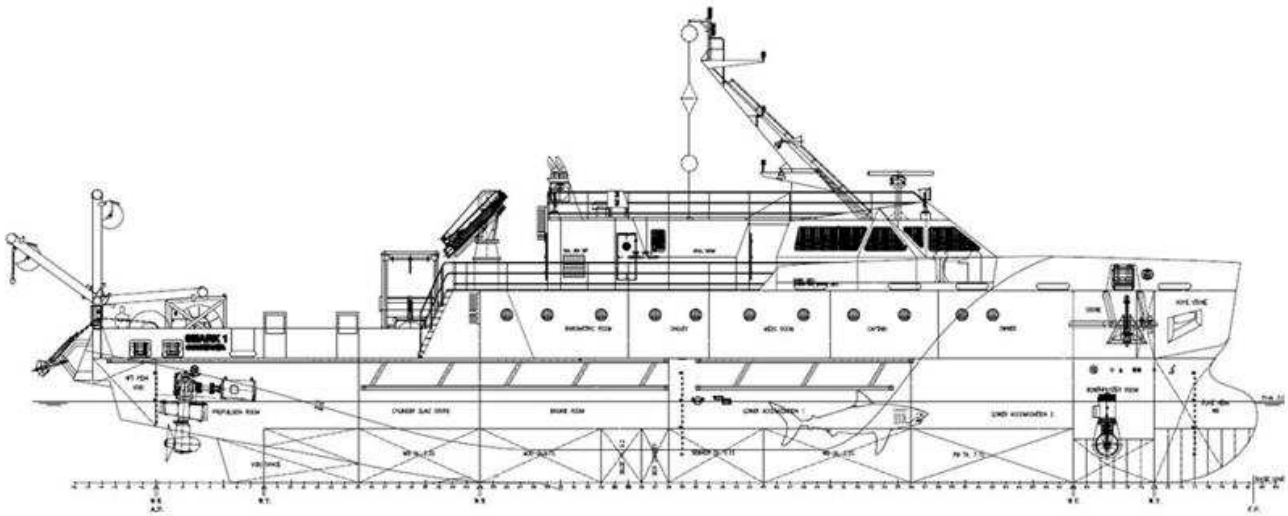
Romania: Constanta Shipyard to Launch ROV-Survey Vessel “SHARK 1” in August

Posted on Jun 6th, 2012



The ROV/Survey vessel SHARK 1, which is fully equipped for safe and efficient offshore operations in the Black Sea, is nearing completion in Constanta Shipyard, Romania and will be launched in August 2012. In addition to the capabilities needed for surveys, the vessel can also offer ROV support for offshore construction, drilling or IRM.

Built for the Romania-based company, Shark Subsea Services, Shark 1 is the first subsea operations support vessel to be built in the country in the past 25 years. Alewijnse RETEC Romania has supplied, installed and commissioned a comprehensive electrical package for the vessel, including the main and emergency switchboards, alarm system, dynamic-positioning and navigation consoles, fire-detection system, cabling, electrical equipment. Alewijnse RETEC also provided the design documentation.



Also aboard Shark 1 is one of Alewijnse RETEC's latest developments for providing the vessel with its 440 V, 60 Hz power supply wherever she may be. The compact, easy-to-handle Stingray Shore Supply Converter can be connected worldwide on shore, to all types of common voltages and frequencies, regardless of the type of electrical supply available. This means that generators will not be needed during port operations, but can be used in parallel with Stingray, providing the vessel with the required voltage. Both US and EU frequency standards and phase rotation are selectable with the push of a button.

The 43-meter long vessel has two rudder propellers and a bowthruster, while the 3.7-meter draft provides the stability required for working in rough open sea conditions. Up to 28 people can be accommodated aboard Shark 1 in a fully air-conditioned environment.

Source: <http://worldmaritimeneews.com/archives/56743/romania-constantia-shipyard-to-launch-rov-survey-vessel-shark-1-in-august/>

Alewijnse RETEC, June 6, 2012