

1. General Services

2,800 m of safe berths (fully equipped)

Pilot & Tugboat services

Attendance for shifting

Various services offered:

- Shore power
- Ballast water
- Technical water
- Compressed air supply
- Oxygen & acetylene lines
- Cranes (50 t to 120 t), etc.
- Storage platforms



We can perform repair works in dock or afloat.

2. Docking Works

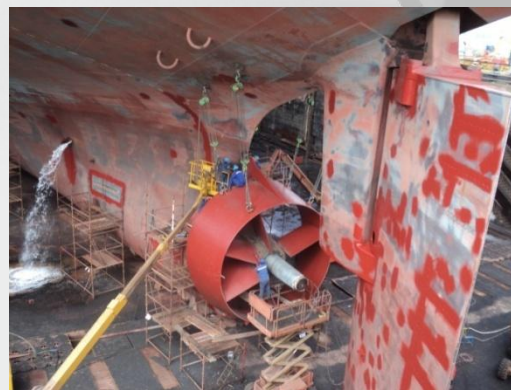
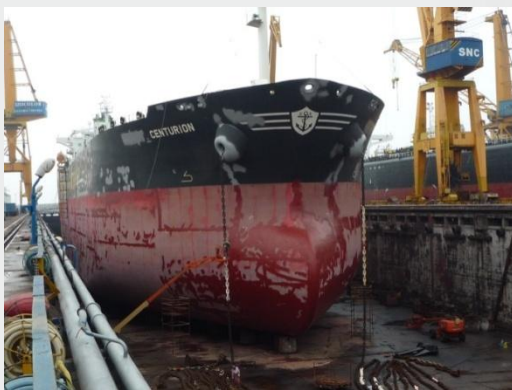
Capacity of introducing ships up to
SUEZMAX/CAPE SIZE

Fully equipped floating & dry docks

- Cranes (5 t ÷ 480 t)
- Air compressed lines
- Oxygen & acetylenes lines

Specific docking works:

- Sea chest o/h
- Anodic protection
- Rudder works
- Tail shaft withdrawal
- Propeller removal & polishing
- Anchor & anchor chains
- Installing stern tube nozzles
(MEWIS DUCT)



We can perform repair works in dock or afloat.

3. Blasting & Painting Works

HPFW washing up to 1,000 bar

Grit blasting to various grades:
SA1, SA2 and SA2,5

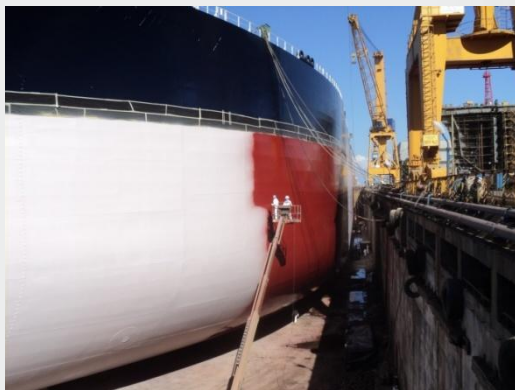
Hydro blasting to various grades,
pressure up to 2,200 bar

Paint applications for various types
of paint, including:

- Phenolic Epoxy
- Siliconic Antifouling
- High abrasive resistant antifouling (3 components)

Full treatment of:

- Hull
- C.O.T.s & Cargo holds
- WBTk (including PSPC)
- Hatch covers, main deck, etc.
- Erecting of scaffolding (available volume of scaffolding: 150,000 cbm)
- Scaffolding daily rate: up to 5,000 cbm per 24 hours
- Blasting daily rate: up to 6,000 sqm per 24 hours
- Painting daily rate: up to 20,000 sqm per 24 hours



We can perform repair works in dock or afloat.

4. Steel Works

Steel works renewal:

- Outer hull
- COT & cargo holds
- WBTk
- Hatch covers

Capacity for extensive steel renewal works, such as: conversions, groundings, collisions

Stainless steel approved procedure

Daily rate of steel removal & replacement: up to 12 t per 24 hours

Available stock materials (abt. 2,000 t of steel)

Purchasing materials from local suppliers, within maximum 3 weeks

Soft steel:

- Renewal
- Manufacturing various outfitting, including galvanizing



We can perform repair works in dock or afloat.

5. Pipe Works

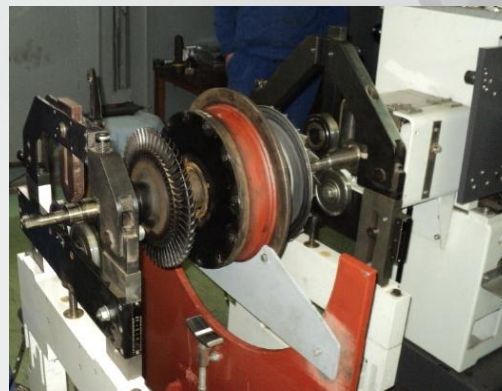
- /// Straight pipe on deck and / or open space renewal, Sch. 40, Sch. 80
- /// Elbow / bend, Low pressure flange, Sch. 40, Sch. 80
- /// Heating coils testing / renewal / repairs
- /// Hydraulic pipes for valves remote control
- /// Manufacturing of new hydraulic installation and cargo systems
- /// Approved procedure & welding materials for stainless steel pipes



We can perform repair works in dock or afloat.

6. Mechanical & Electrical Works

- Main Engines & Auxiliary Engines Overhauling (MAN B&W, Kawasaki, Sulzer), including parts reconditioning
- Engine's Governors & Turbo chargers Overhauling (Sulzer, MAN, Brown Bowery, Napier type)
- Air coolers, Boilers & Heat exchangers Overhauling
- Mooring winches, PV Valves & Pumps Overhauling
- Lifeboats, Davits & Crane tests
- Alternators, Electric motors Overhauling
- Installation of electric cables



We can perform repair works in dock or afloat.

7. Other services: Machining & Tools

LATHE MACHINES

- SKODA 1600 x 1600 > able to machine shafts up to 16,000 mm length, 1,600 mm diam. and 28,000 kg
- 2 units carousel lathes > able to machine various parts with diameters up to 2,000 mm and 10,000 kg weight
- Portable lathe for machining in-situ
- Various other types of workshop lathe machines



LAPPING MACHINES

- Crankshaft lapping (rotation diameter: 630 mm; weight (max.): 600 kg)
- 4 units lapping machines for pieces up to 350 mm diam. And max. weight up to 300 kg
- Horizontal lapping machine

GEAR CUTTING MACHINES

- 3 units able to cut various types of tooth gears

OTHER MACHINES & TOOLS

- Drilling / Milling machines
- Shaping / Cutting machine
- High capacity press machine
- Roller machine